

## Filterwechsel UFA.025.030(.XL) Filter change UFA.025.030(.XL)

### HINWEIS

Bei den gebrauchten Aktivkohlefiltern handelt es sich um gefährlichen Abfall. Die Entsorgung erfolgt gemäß den behördlichen Vorschriften oder durch einen Servicetechniker der asecos GmbH.

### Empfohlener Abfallschlüssel:

06 13 02\* - gebrauchte Aktivkohle (außer 06 07 02)

### PLEASE NOTE

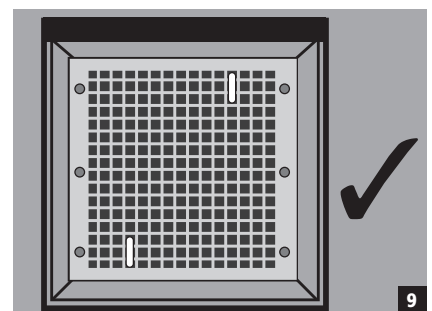
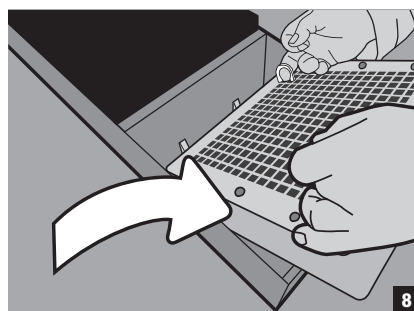
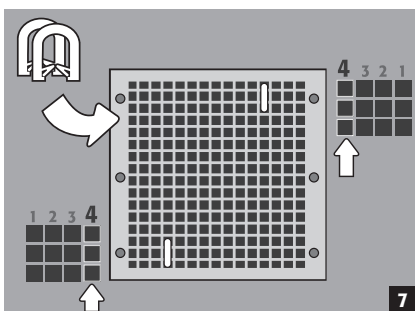
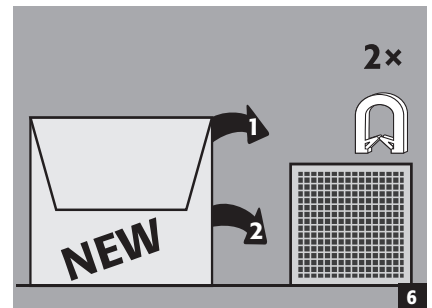
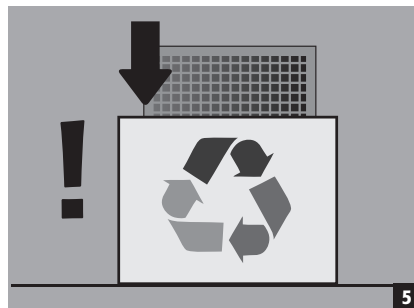
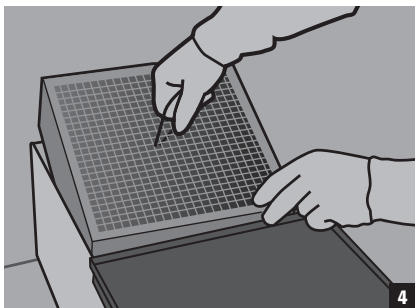
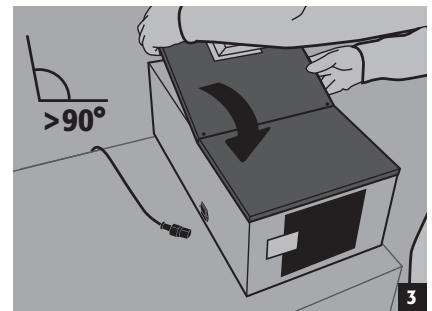
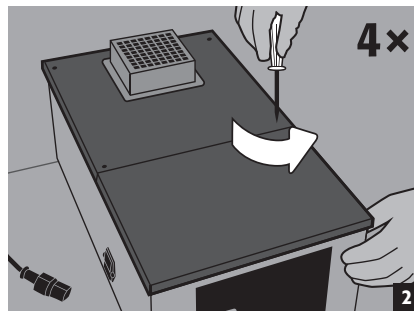
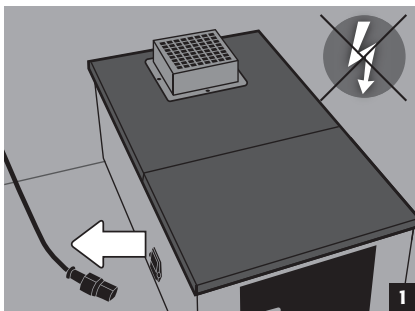
Used activated carbon filters are hazardous waste. They must be disposed of in accordance with official regulations or by a service technician from the asecos GmbH.

### Recommended waste entry:

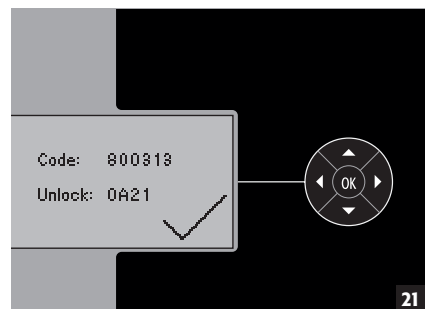
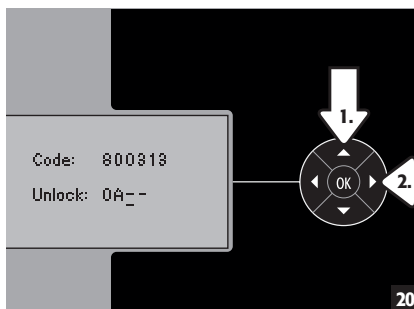
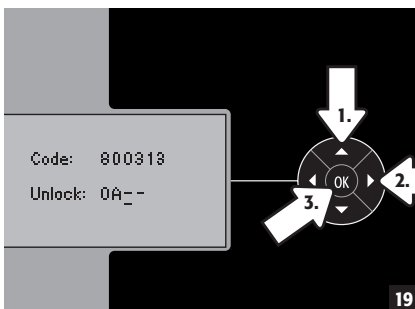
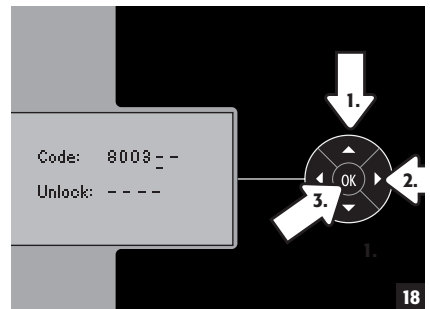
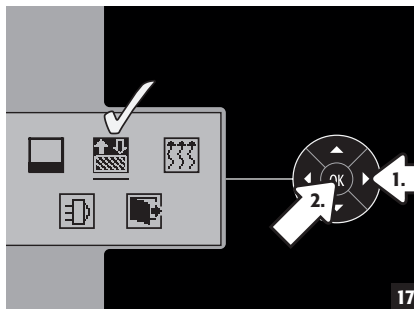
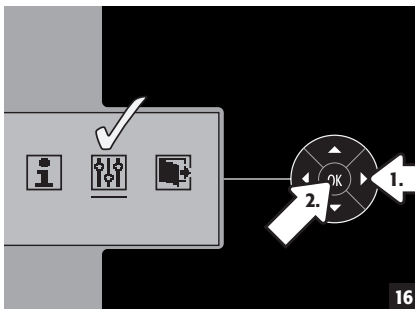
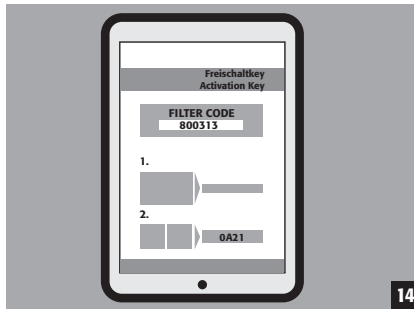
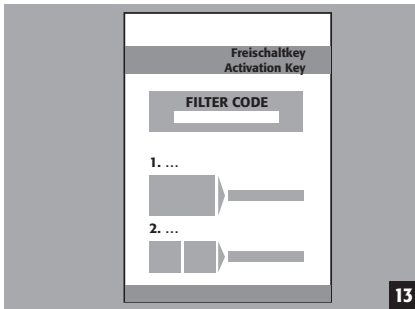
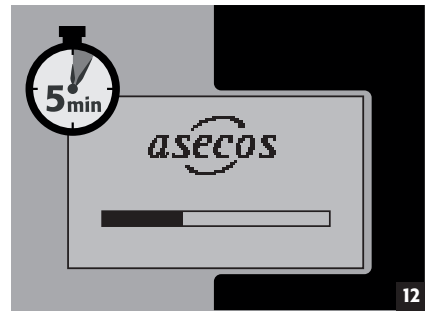
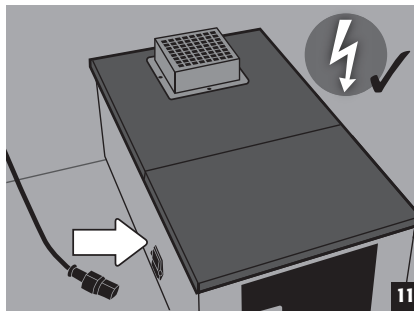
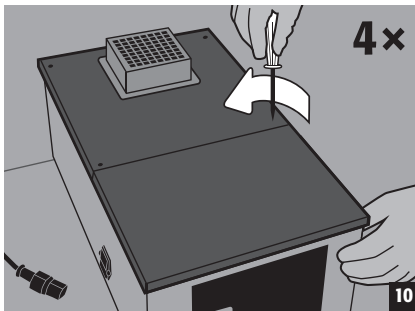
06 13 02\* - spent activated carbon (except 06 07 02)



## SCHRITT 1: FILTER WECHSELN | STEP 1: FILTER CHANGE



## SCHRITT 2: FILTER-AKTIVIERUNG | STEP UP 2: ACTIVATION OF FILTER



### HINWEIS

Erscheint nach Eingabe ein X, so wurde der Code entweder falsch eingegeben oder es wurde ein bereits verwendeter Freischaltkey genutzt. In diesem Fall müssen ein paar Sekunden gewartet werden, bis der Bildschirm Bild 17 zeigt. Starten Sie dann die Code-Eingabe erneut.

### PLEASE NOTE

If an X appears after entering the code, it was either entered incorrectly or an activation key that had already been used was used. In this case you have to wait a few seconds until the screen shows picture 17. Then start entering the code again.

